

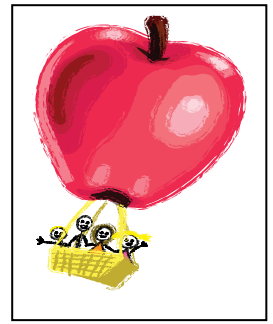
## Warren County Early Childhood Committee

Minutes/Notes June 7, 2017

10:00 A.M.

Wells Fargo

515 N. Jefferson Way  
Indianola, Iowa 50125



### Attendance

Lora Kraft, Kelly Parker, Cynthia Nitchels, Jovanka Westbrook, Val Cameron, Bonnie Forsythe, Megan Bernholtz, Karen Nelson, Kim Kirkpatrick, Myra Willms, Michelle Greenough, Kelsey Mann, Sara Peterson, Nikki McElwee and Debra Schrader.

### Introductions

Attendees introduced themselves and told what electronic device they couldn't live without.

### Head Start

Head Start has openings for 1/2 day programming. Head Start will be moving toward all day programming by 2020.

### ISU Extension

Extension will be celebrating 100 years of existence on Sunday June 18 from 4:30-7:00.

### EFR

EFR will be sponsoring a bike ride, 45 mile and a 10 mile bike ride on June 10.

### Health and Safety Fair

The Warren County Health and Safety fair is June 18 from 3:00-6:00 on the courthouse lawn in Indianola.

### American Lung Association

ALS conducted a child care survey about 2nd hand smoke and had a 30% return rate and 6 tobacco/nicotine free child care policies were implemented.

### 1st Five Coalition

1st Five Coalition and Warren County Prevent Child Abuse will be offering a viewing of Paper Tigers April 24 from 6:15-8:30 at Farm Bureau in Indianola. Contact Veronica McVay at veronicam@warrencountyia.org or 515-961-1074 for more information.

### United Health Care

UHC offers cell phones at no cost to the client.

### IMPACT

Summer office hours are now Monday, Wednesday, and Friday 9:00-4:00 and closed Tuesday and Thursday.

### Child Abuse Data

Child abuse data was shared with the group. Warren County ranks 61st for rate of child abuse with 128 founded cases of abuse.

### Warren County Wellness

The Warren County Wellness Coalition will meet August 2, October 4 and December 12 at 12:30 at House of Mercy. Everyone is invited to attend.

### [ALICE Report](#)

United Way has produced a report for each county in Iowa. ALICE stands for asset limited, income constrained, employed are households that earn more than the U.S. Poverty level, but less than the basic cost of living for the county. Warren County ranked poor for house affordability, fair for job opportunities and fair for community resources. A family of 2 adults 1 infant and 1 preschool would need \$50,196 to pay for daily core expenses.

### 4 R Kids Update

The Board is looking for board members, preferably a male. The board made granted funding for FY18 and list of programs supported was provided to the group.

### Roll and Read

Roll and Read event had 82 in attendance. A full report will be available at a later date.

### Family Support Map

The group reviewed and updated the family support map. It was noted that the Family Nutrition program offered by ISU Extension will no longer be continued.

### Next Meeting

Next meeting is September 6, 2017 at Wells Fargo, 2nd Floor, 515 N. Jefferson Way in Indianola Iowa.